

Customer :

customer

Customer part :

customer part

Comment :

Comment

S1=0.04

S2=0.16

Tmax=398

Tp S2=437.0

PI=0.2

HI=53

Sample =16519.8

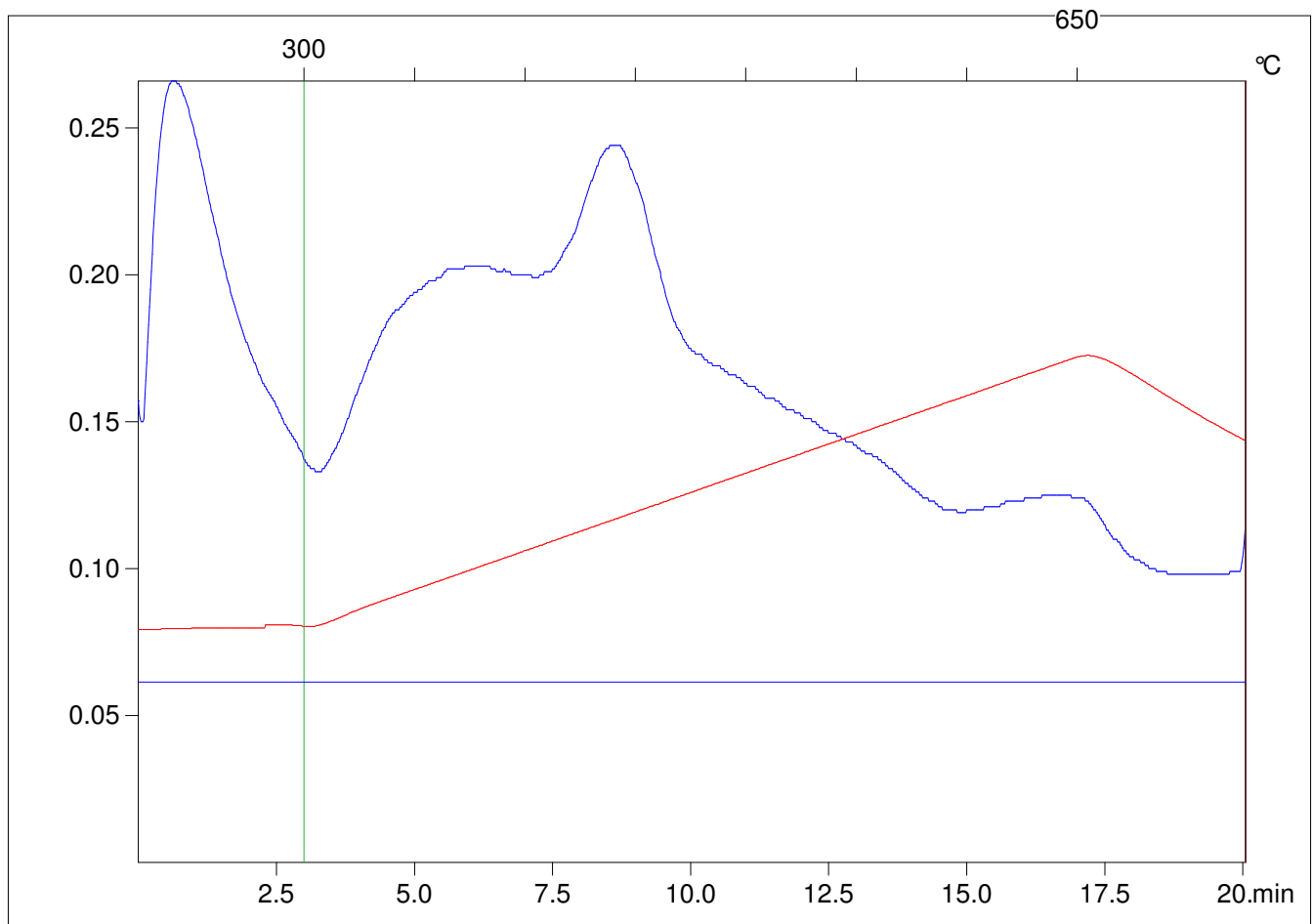
Method =Bulk Rock

Cycle=Basic

KFID(10\*9)=1167

Qty =70.4

TOC=0.3



C:\VINC\PK141021\PK026.R00 : FID pyrolysis graphic

State

Pyro Status

Oxi Status